



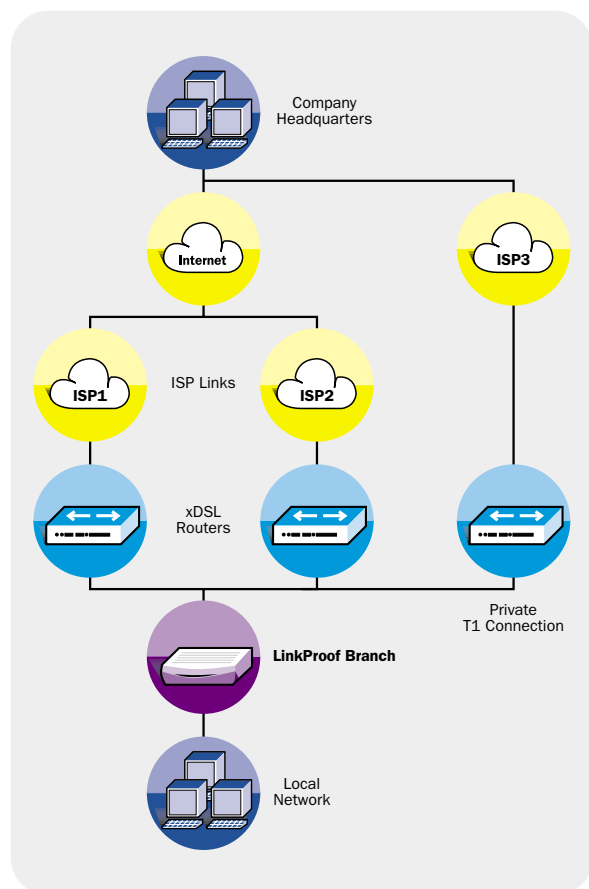
LinkProof Branch Remote Office Connection

LinkProof Branch manages traffic across all remote office links to ensure high availability, complete security and effective utilization of all branch connections. By ensuring reliable and optimized communications using any combination of links, LinkProof Branch ensures the continuity of mission critical applications at the branch office, while dramatically cutting connectivity costs.

LinkProof Branch enables the creation of fault-tolerant multi-homed networks using any combination of public and private connections including broadband, T1/E1, and frame relay. This translates into highly economical and efficient connectivity for branch offices, while ensuring bandwidth for mission critical applications.

LinkProof Branch delivers concurrent line usage and optimized content routing across all links, optimizing bandwidth utilization while accelerating the performance of distributed applications between headquarters and branch locations. Bandwidth management across headquarters and branch office links controls QoS, while enabling economical bandwidth upgrades based on evolving capacity requirements. LinkProof Branch application security protects organizations against viruses and malicious attack signatures across branch offices in real-time. Integrated VPN gateway technology ensures a secure channel over public networks for distributed applications. Delivering an optimal branch office connectivity solution, integrated VPN gateway removes the complex remote-side administration burden while minimizing the overhead and the capital investment required for secure connectivity.

Providing high availability and secured communication with flexible connectivity options, LinkProof Branch delivers efficient, reliable and price controlled remote office connections.





Availability	
Connectivity Fault Tolerance	By automatically bypassing failed links and directing traffic to operational links LinkProof Branch ensures 24x7 continuity of mission critical applications (e.g. email, CRM, ERP) for all branch offices
Performance	
Optimized Performance of Applications, End-to-End	Content routing and load balancing across all enterprise links accelerates distributed application performance and boosts remote transaction speeds
Guaranteed Service Levels	Prioritization and shaping of end-to-end link traffic to ensure bandwidth levels for effective operation of mission critical applications
Security	
Integrated IPsec VPN Gateway	Fully integrated VPN gateway delivers complete end-to-end secure connectivity between headquarters and branch offices without additional equipment purchases
End-to-End Link Application Level Security	Real-time protection for branch offices against viruses, offering 'zero day' protection from over 1,400 attack signatures by cleaning links from security violations
Additional Benefits	
Centralized Management	Configware Insite enables centralized management of hundreds of branch offices for simplified configuration, translating into efficient, multi-location management, troubleshooting and detailed reporting
Site wide Coverage & Control	LinkProof Branch is part of the LinkProof family and is seamlessly integrated into enterprise connectivity architectures with capacity requirements ranging from 5Mbit/sec to 3-Gigabit/sec

Product Specifications

Height: 43.8mm / 1.7 in
 Width: 240mm / 9.4 in
 Depth: 170mm / 6.6 in
 Weight: 0.5kg / 1.1 lb

Ports:
 WAN/LAN: 8 Ethernet 10/100 Base-T IEEE 802.3, 802.3u
 Console port: RS-232 (DB-9)



Certainty Support
Technical Support Program
 All Radware products are supported through the Certainty Support Program consisting of four elements - phone support, software updates, hardware maintenance and on-site support, combined into a single support package.
 Learn more at: www.radware.com/support/



Security Update Service
Emergency & Weekly Attack Filters
 Radware Security Update Service provides automated emergency and weekly Application Attack Filter Updates for subscribers, protecting against over 1,400 known attacks and new application vulnerabilities as they emerge, for immediate and ongoing application defense.